



# MKT V-5ESC BOTTOM CLAMP CONVERSION

Converting standard sheet jaws to Esc round jaws. Please read through the instructions thoroughly before performing any of the steps.

# SAFETY INSTRUCTIONS

The following signal words will be found in this guide and may also be found in the MKT V-5Esc Operation, Maintenance and Parts Manual. These words are intended to alert the operator(s) to a hazard and the degree of severity of the hazard.



Indicates a hazardous situation which, if not avoided, will result in death or serious injury.



Indicates a hazardous situation which, if not avoided, could result in serious injury.



Indicates a hazardous situation which, if not avoided, could result in minor injury or moderate injury.

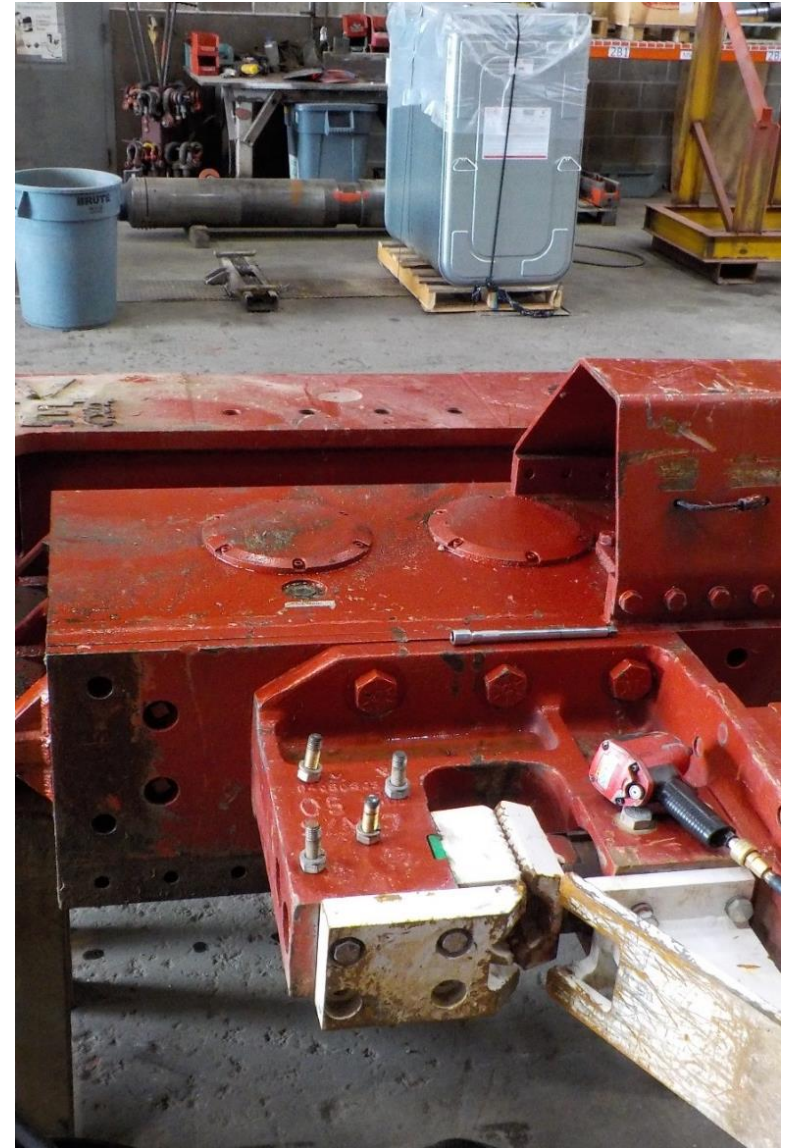


Indicates a property damage message.

# BOTTOM CLAMP CONVERSION

With the MKT V-5Esc on a flat level surface.

The MKT V-5Esc shipping stand is a suitable support device for this procedure.





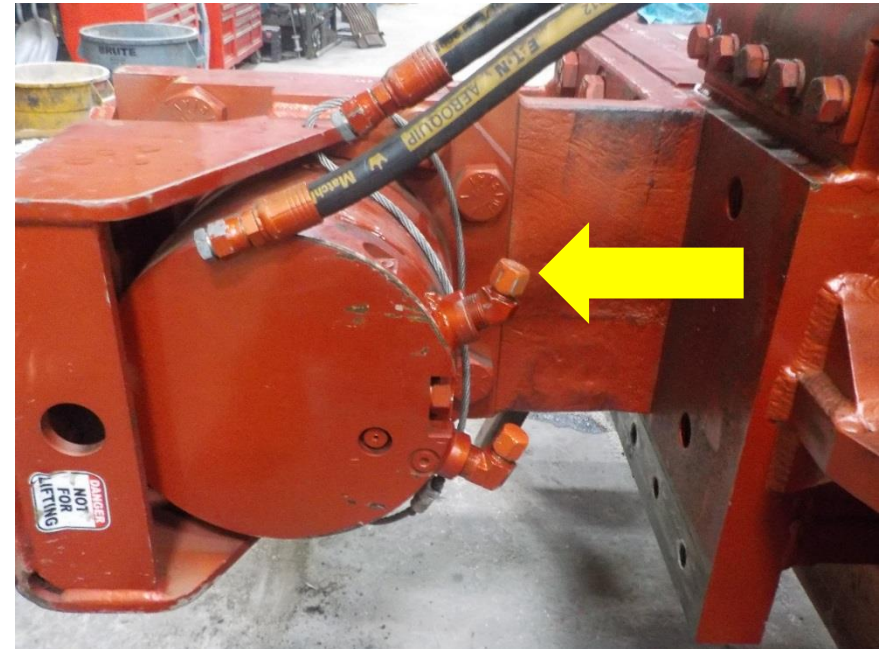
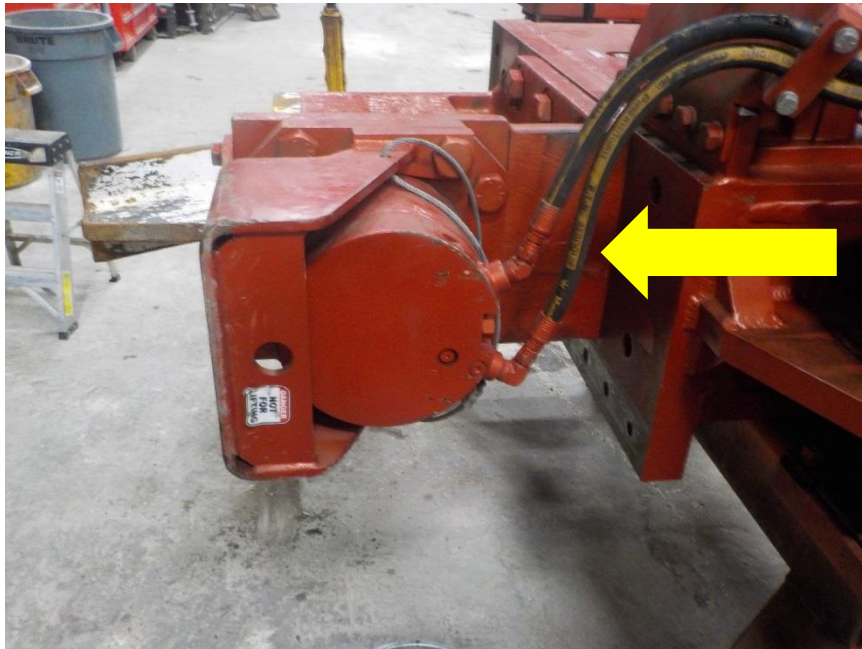
# BOTTOM CLAMP CONVERSION

Locate the clamp lines



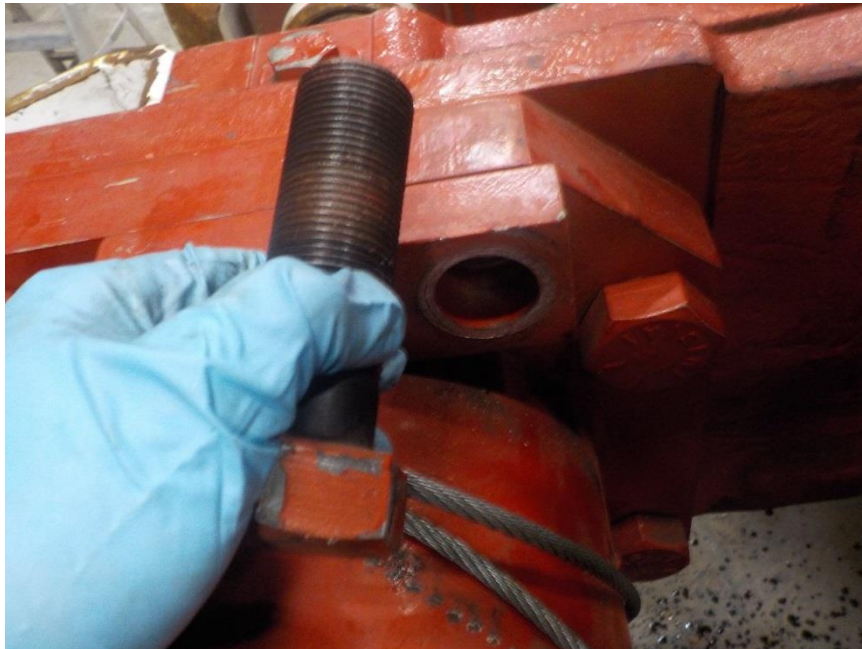
Contents of hydraulic components may be under pressure extreme care should be taken when opening the components.

Cap and plugs lines according



# BOTTOM CLAMP CONVERSION

Remove 1 1/4"-12 x 4" bolt (9016224)-  
2 places from clamp guard



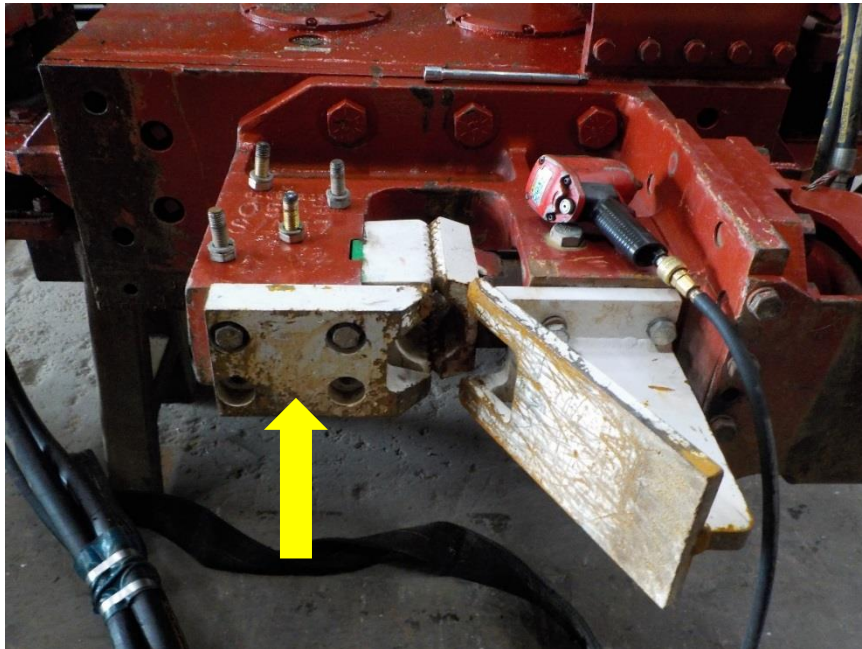
Remove 3/4"-10 x 2" bolt (9015917)-4  
places from clamp guard.



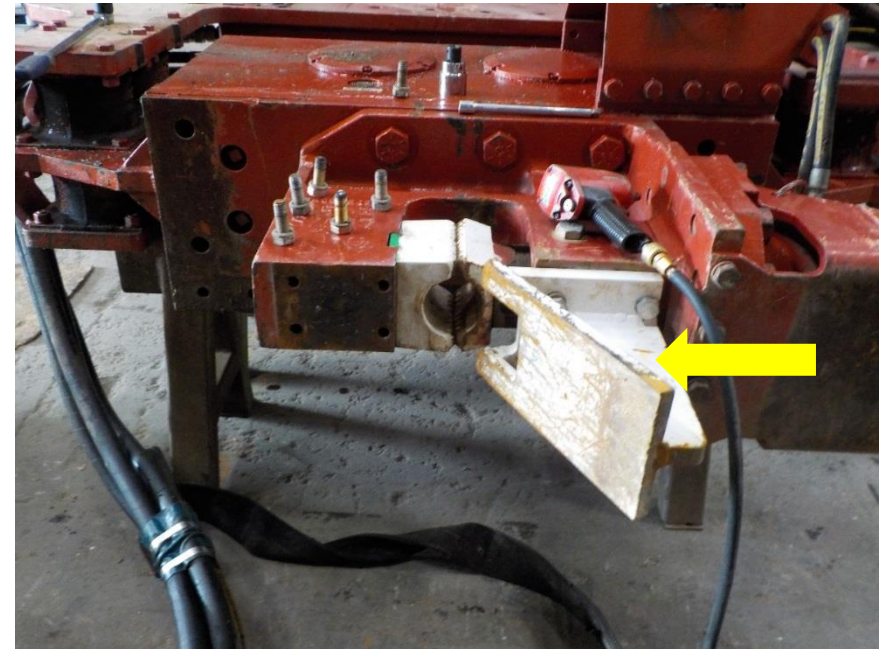


# BOTTOM CLAMP CONVERSION

Remove the short jaw guide  
(4050359)

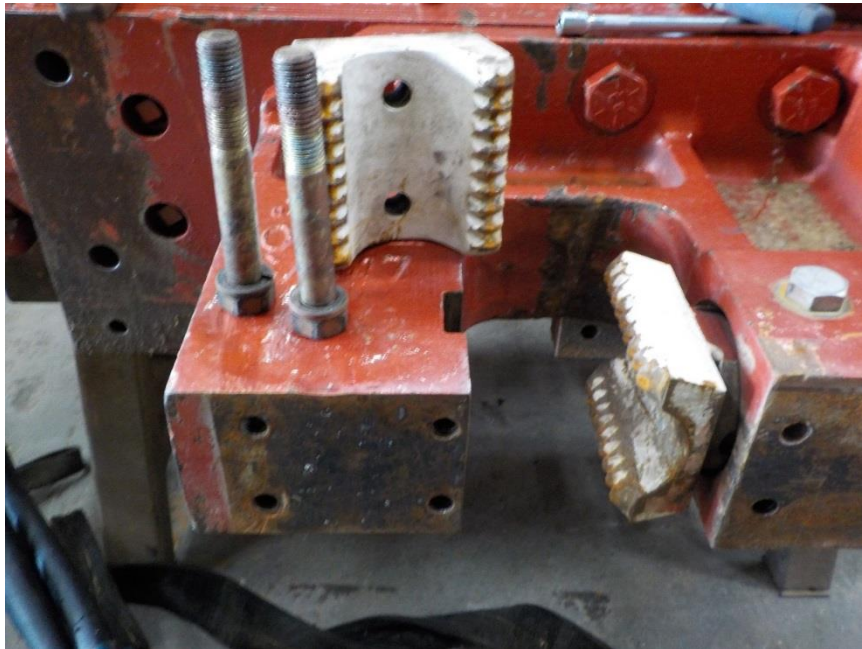


Remove the tall jaw guide  
(4050134)

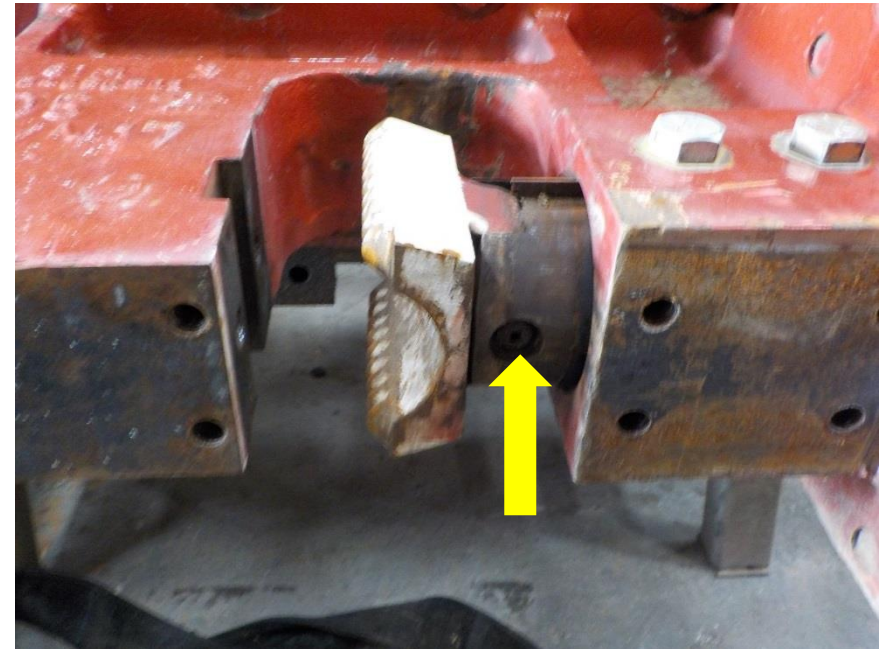


# BOTTOM CLAMP CONVERSION

Using an auxiliary hydraulic power pack open the jaws and remove the fixed jaw (4050284)



close the clamp and remove the roll pin (9240055) and standard V-5Esc moveable jaw (4050076)





# BOTTOM CLAMP CONVERSION

Remove the slide key bolts (4050091)-2 places



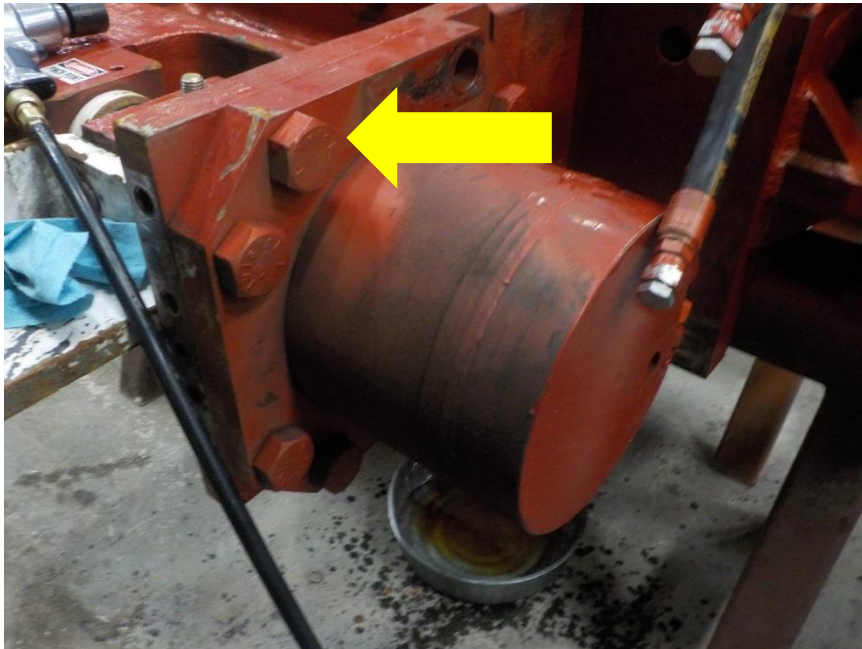
Remove the slide key (4050089)





# BOTTOM CLAMP CONVERSION

Remove 1 1/4"-12 x 3" bolt (9016218)-6 places from clamp cylinder flange.



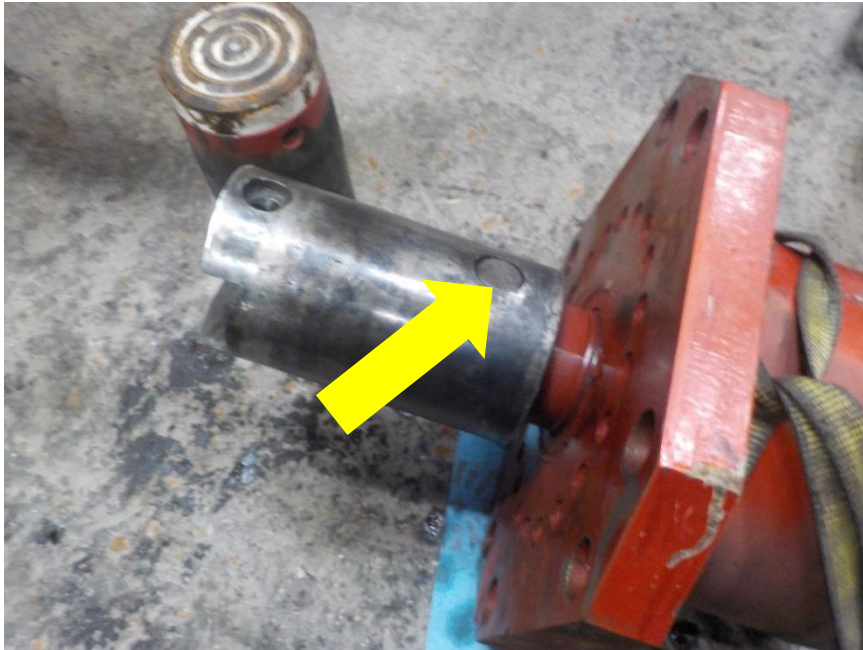
Remove the clamp cylinder with standard clamp slide from the clamp housing



# BOTTOM CLAMP CONVERSION

Remove clamp slide pin. (4200138)

The pin will be marked with a T on one of the pin. This is the top of the pins taper. Strike or press the pin from the opposite end of the T to remove.



Now you can remove the clamp slide (4050311)



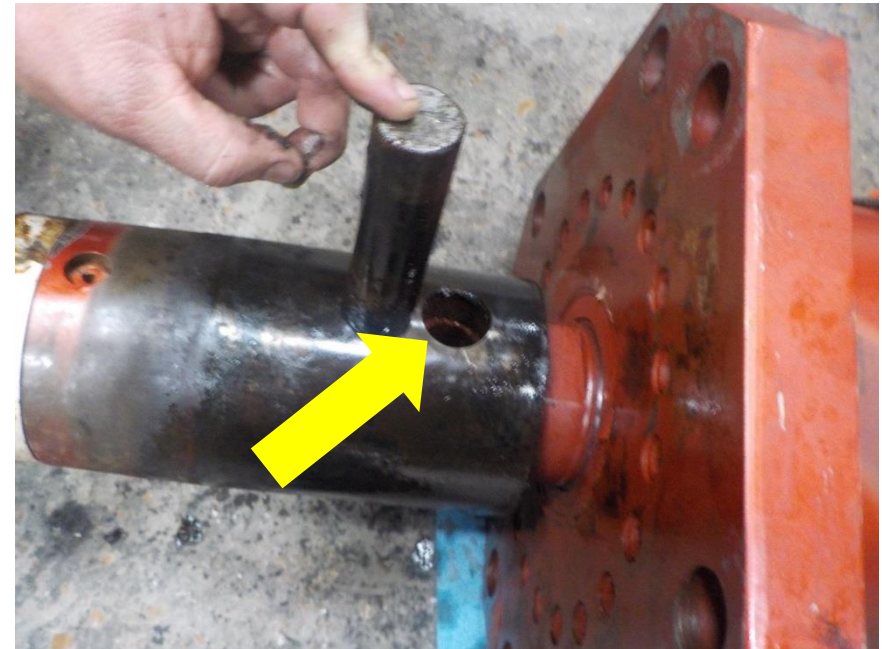


# BOTTOM CLAMP CONVERSION

Now you can install the clamp slide (4950063)



Install clamp slide pin (4200138) The pin will be marked with a T on one of the pin. This is the top of the pins taper. Strike or press the pin from the T end to install. Continue until flush

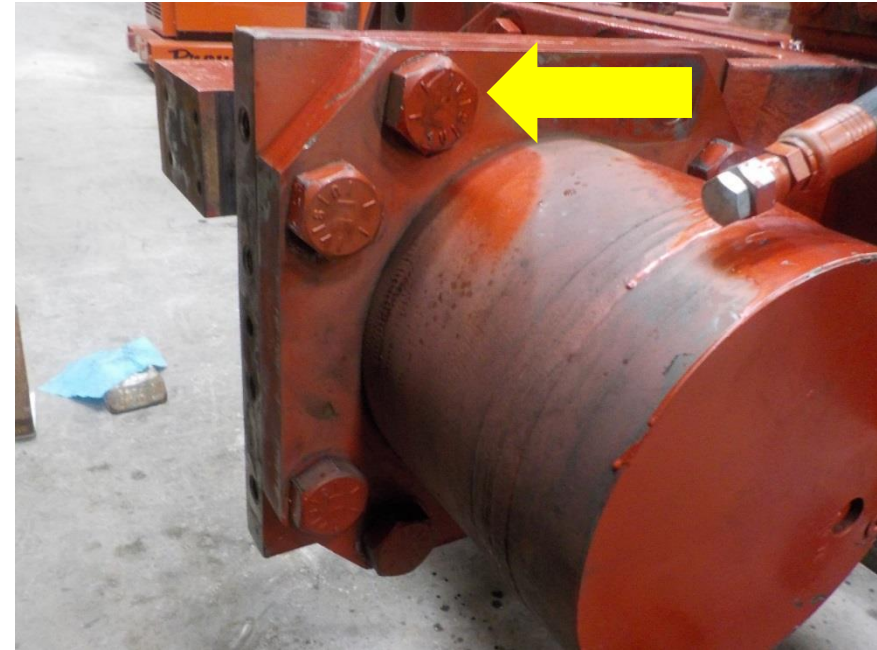


# BOTTOM CLAMP CONVERSION

Install clamp cylinder with round clamp slide



Replace 1 1/4"-12 x 3" bolt (9016218)-  
6 places on clamp cylinder flange.  
Apply a liberal amount of copper  
based anti-seize to the treads of  
each bolt. Torque to 1500 ft. lbs.





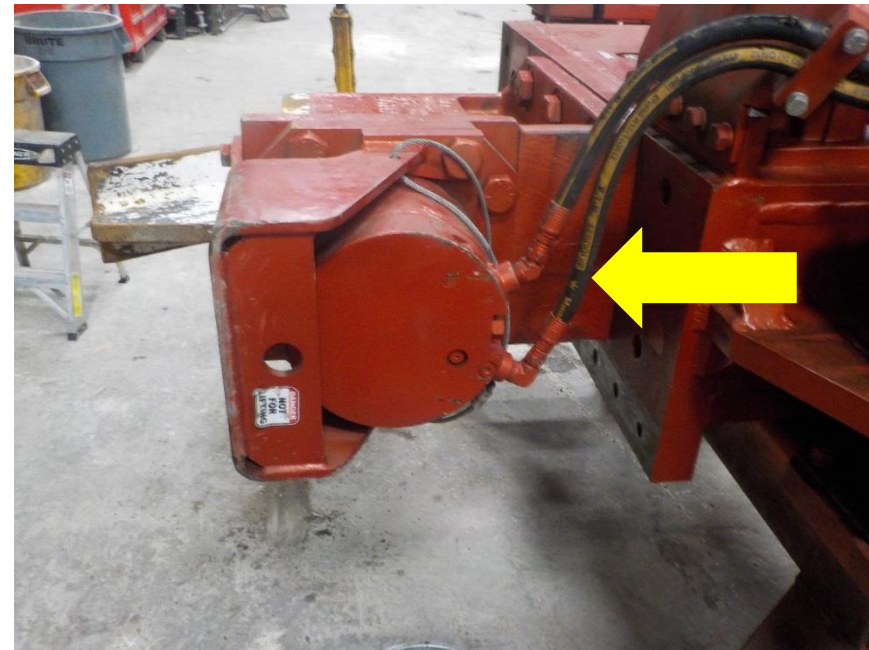
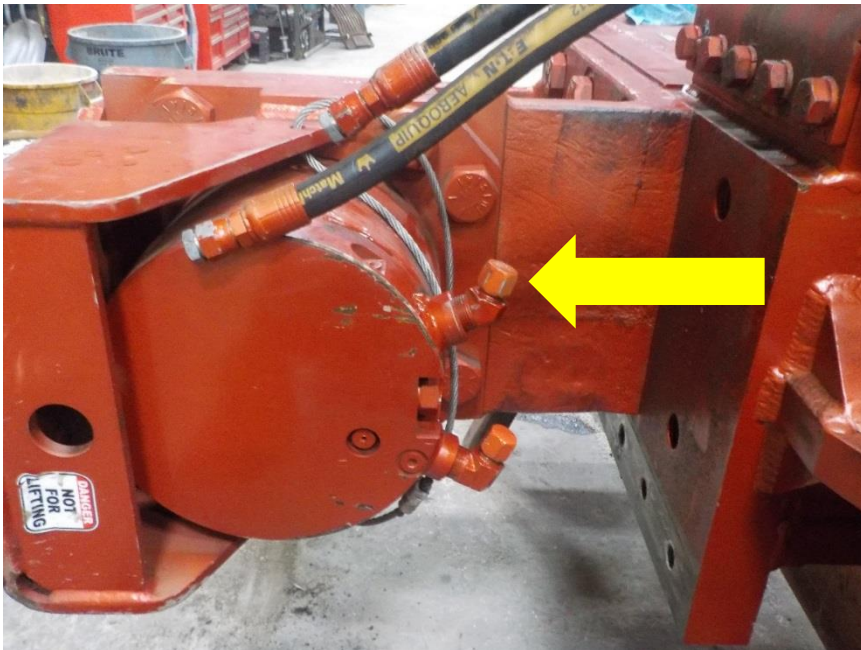
# BOTTOM CLAMP CONVERSION

Locate the clamp lines



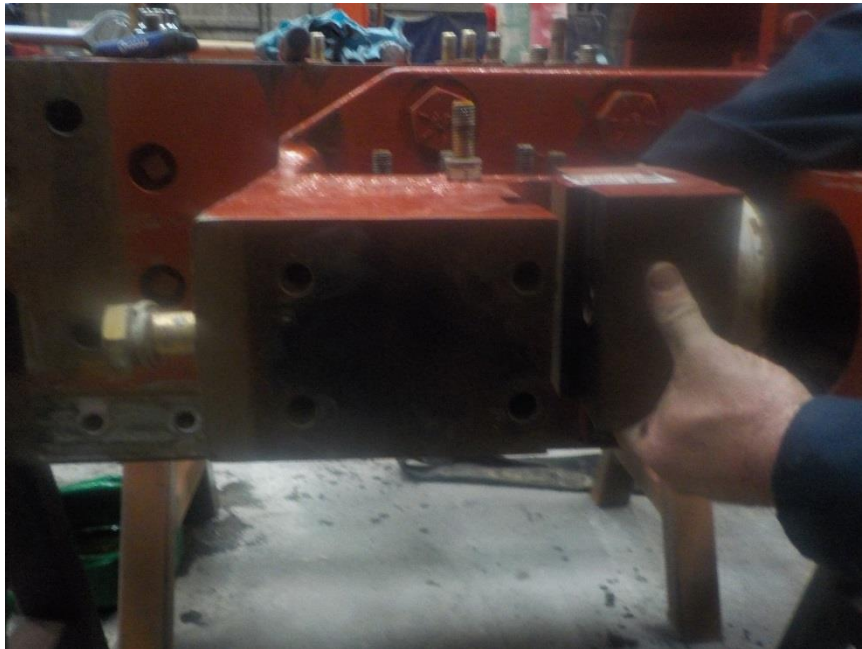
Contents of hydraulic components may be under pressure extreme care should be taken when opening the components.

Remove the caps and plugs and reconnect the lines accordingly



# BOTTOM CLAMP CONVERSION

Install Fixed jaw adapter  
(4950649)



Install Fixed jaw bolts 1"-8 x7"  
(9016137)-2 places with lock washers  
(9030612) torque 600 ft.lbs





# BOTTOM CLAMP CONVERSION

Install  $\frac{3}{4}$ "-10 x 2" bolts (9015917)-4 places  
and lock washers (9030610) with short jaw  
guide (4051254) torque 250 ft.lbs

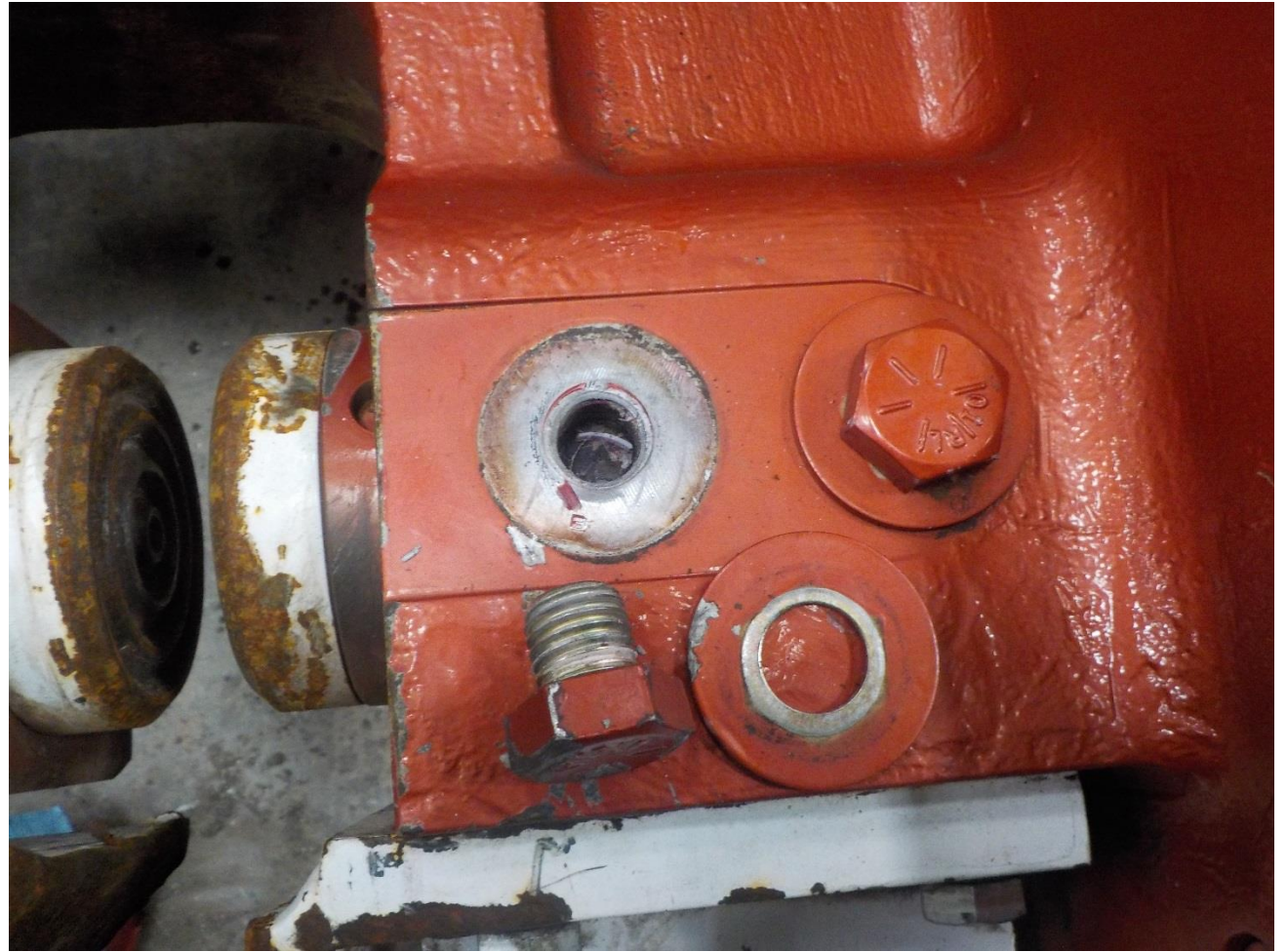


Install  $\frac{3}{4}$ "-10 x 2" bolts (9015917)-4 places  
and lock washers (9030610) with tall jaw  
guide (4050134) torque 250 ft.lbs



# BOTTOM CLAMP CONVERSION

Install 1"- 8 x 1" bolt (9016101)-2  
places with 1" flat washers  
(9020107)-2 places







**WARNING**

THE BOTTOM CLAMP  
CONVERSION IS NOT  
COMPLETE UNTIL YOU HAVE  
BLEAD THE CLAMP

Please Refer to the procedures in the MKT V-5Esc  
Service, Operating, and Maintenance Manual for  
clamp bleeding instructions.



## **WARNING**

THE FOLLOW RESOURCES HAVE DETAILED  
INSTRUCTIONS ON PROPERLY BLEEDING THE  
CLAMP(S)

- Please Refer to the procedures in the MKT V-5Esc Service. Operating, and Maintenance Manual for clamp bleeding instructions.
- Please refer to the MKT V-5Esc installation guide with or with out power unit, depending on your requirements
- All of these resources can be located on our [website](http://www.mktpileman.net/installation---set-up-documents.html)<http://www.mktpileman.net/installation---set-up-documents.html>



# BOTTOM CLAMP CONVERSION COMPLETE

You are now ready to put the MKT V-5Esc vibratory hammer to work. Please click the link to view an animation of the MKT V-8Esc in action <https://www.youtube.com/watch?v=nt2KZI4YErk>

If you have any questions please click on [www.mktpileman.com](http://www.mktpileman.com) for your nearest MKT representative