



# MKT V-5ESC BOTTOM CLAMP CONVERSION

Converting Round jaws to standard sheet jaws. Please read through the instructions thoroughly before performing any of the steps.

# SAFETY INSTRUCTIONS

The following signal words will be found in this guide and may also be found in the MKT V-5Esc Operation, Maintenance and Parts Manual. These words are intended to alert the operator(s) to a hazard and the degree of severity of the hazard.



Indicates a hazardous situation which, if not avoided, will result in death or serious injury.



Indicates a hazardous situation which, if not avoided, could result in serious injury.



Indicates a hazardous situation which, if not avoided, could result in minor injury or moderate injury.

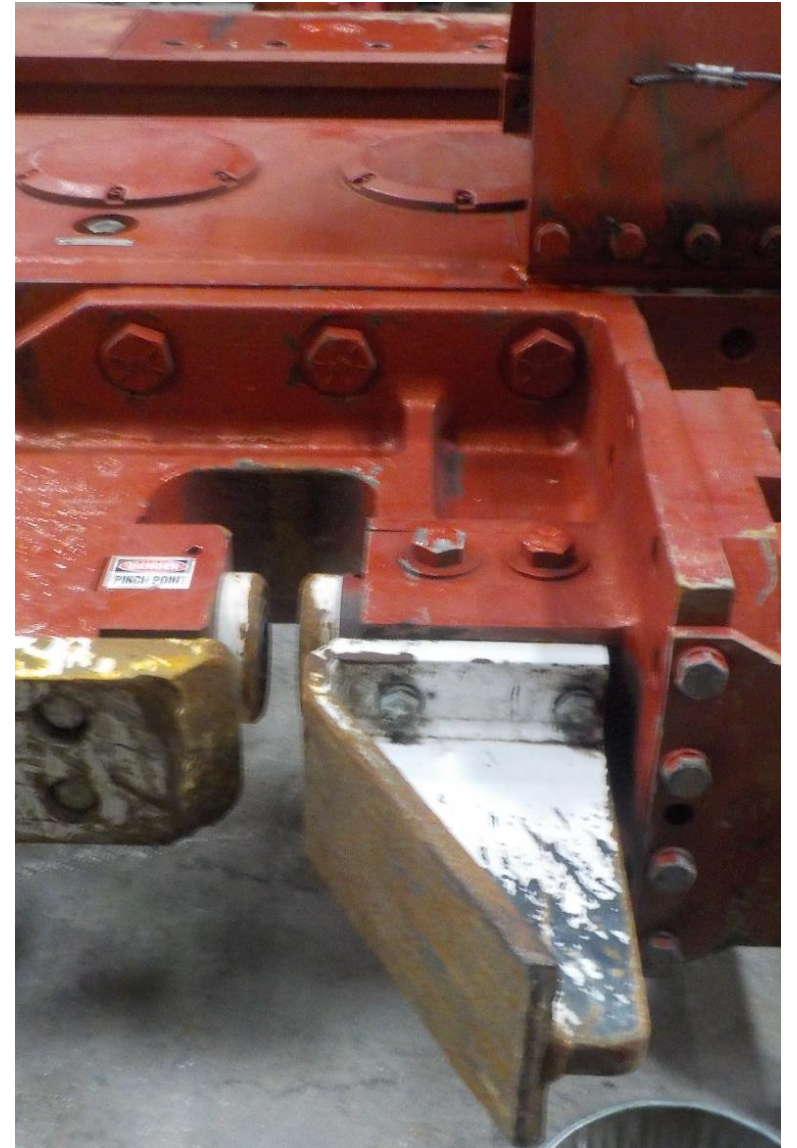


Indicates a property damage message.

# BOTTOM CLAMP CONVERSION

With the MKT V-5Esc on a flat level surface.

The MKT V-5Esc shipping stand is a suitable support device for this procedure.





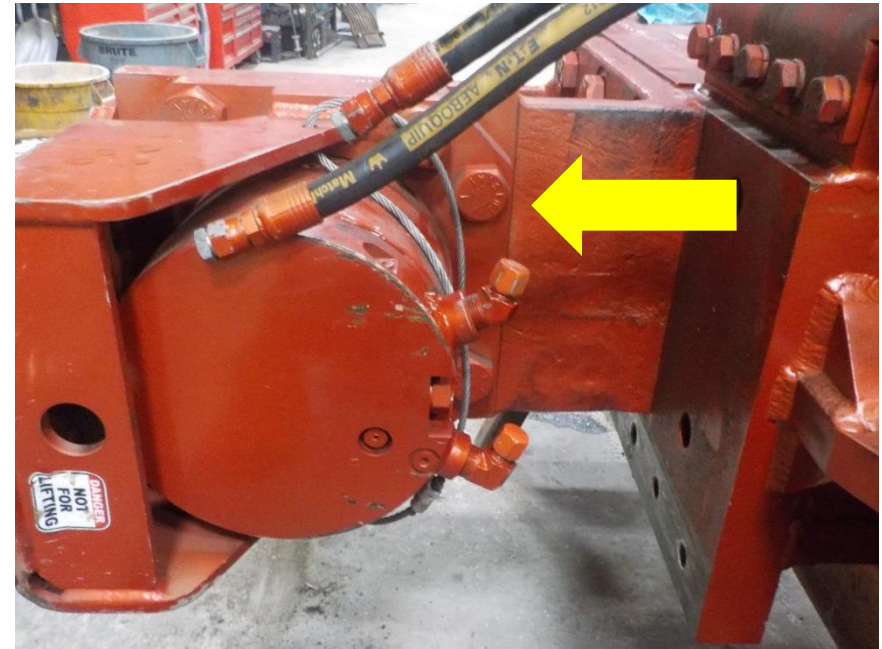
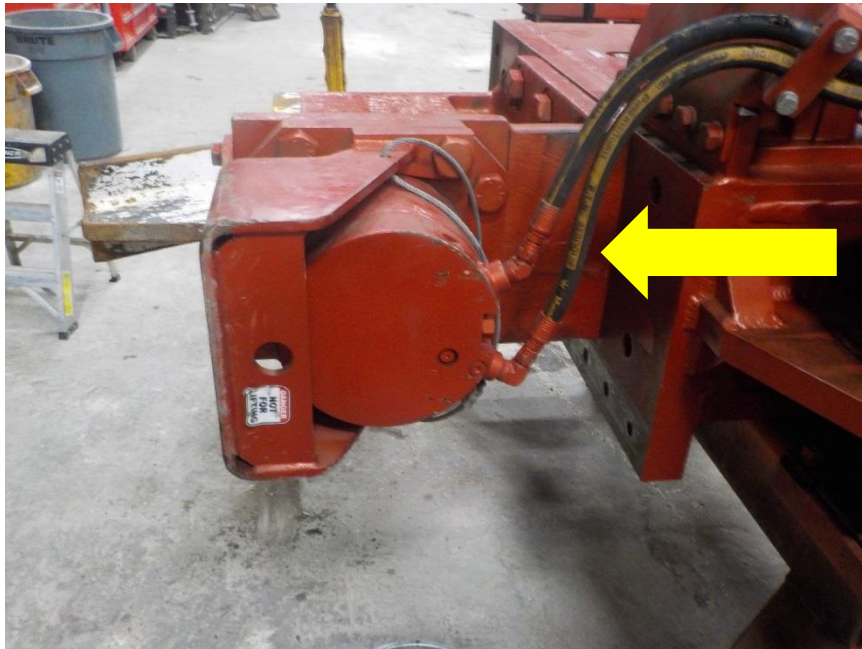
# BOTTOM CLAMP CONVERSION

Locate the clamp lines



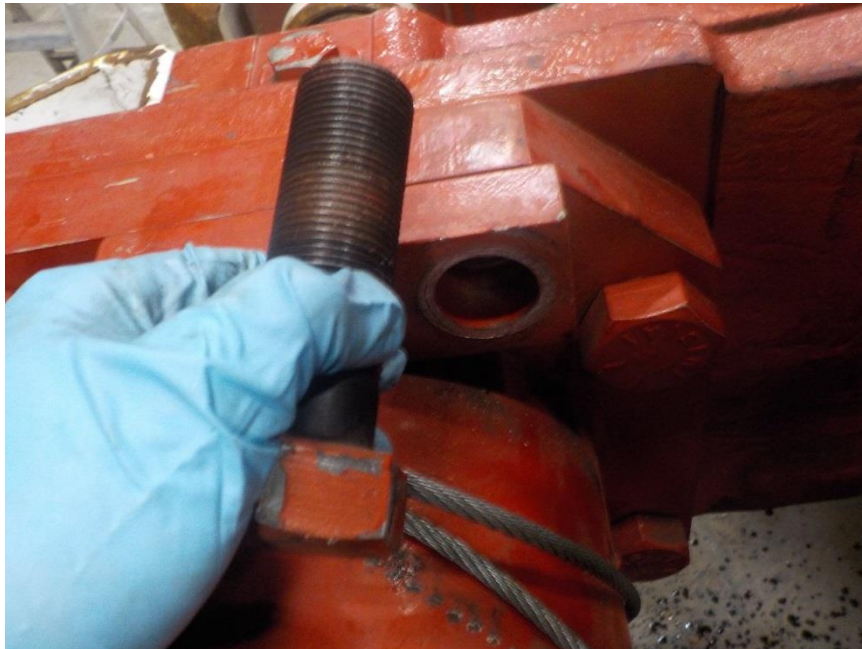
Contents of hydraulic components may be under pressure extreme care should be taken when opening the components.

Cap and plugs lines according



# BOTTOM CLAMP CONVERSION

Remove 1 1/4"-12 x 4" bolt (9016224)-  
2 places from clamp guard



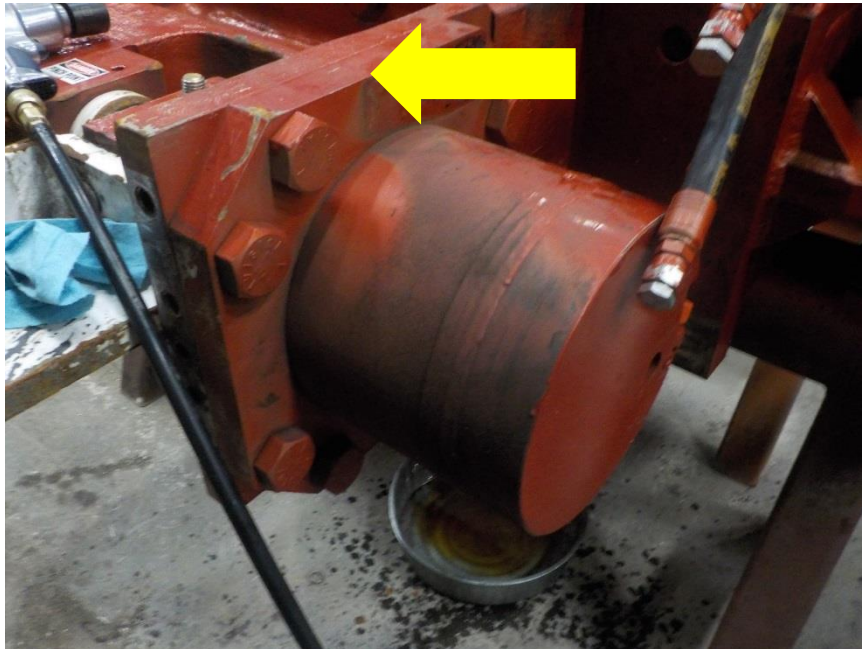
Remove 3/4"-10 x 2" bolt (9015917)-4  
places from clamp guard.





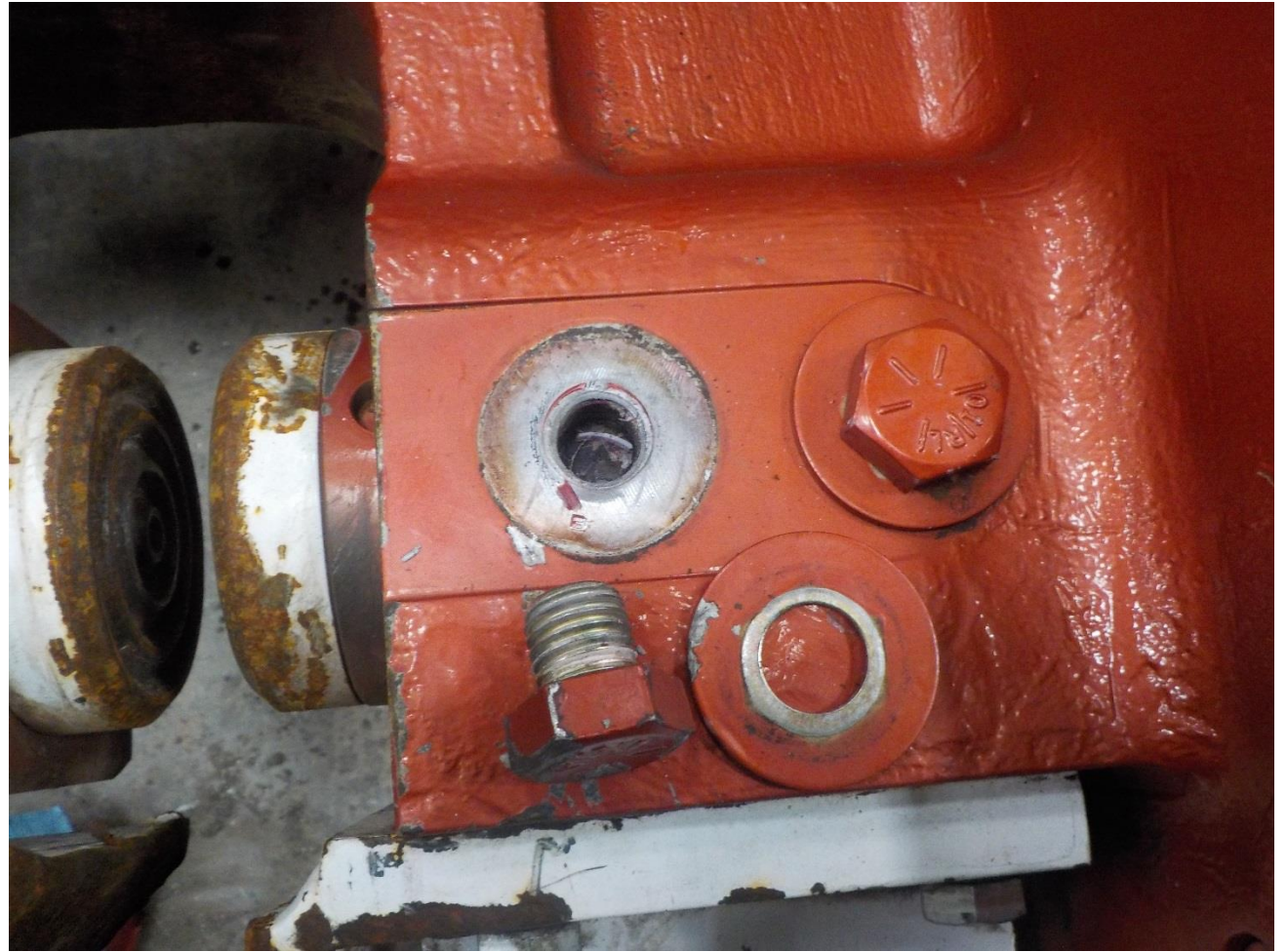
# BOTTOM CLAMP CONVERSION

Remove 1 1/4"-12 x 3" bolt  
(9016218)-6 places from clamp  
cylinder flange.



# BOTTOM CLAMP CONVERSION

Remove 1"- 8 x 1" bolt  
(9016101)-2 places with 1" flat  
washers (9020107)-2 places





# BOTTOM CLAMP CONVERSION

Remove clamp cylinder  
from the clamp housing

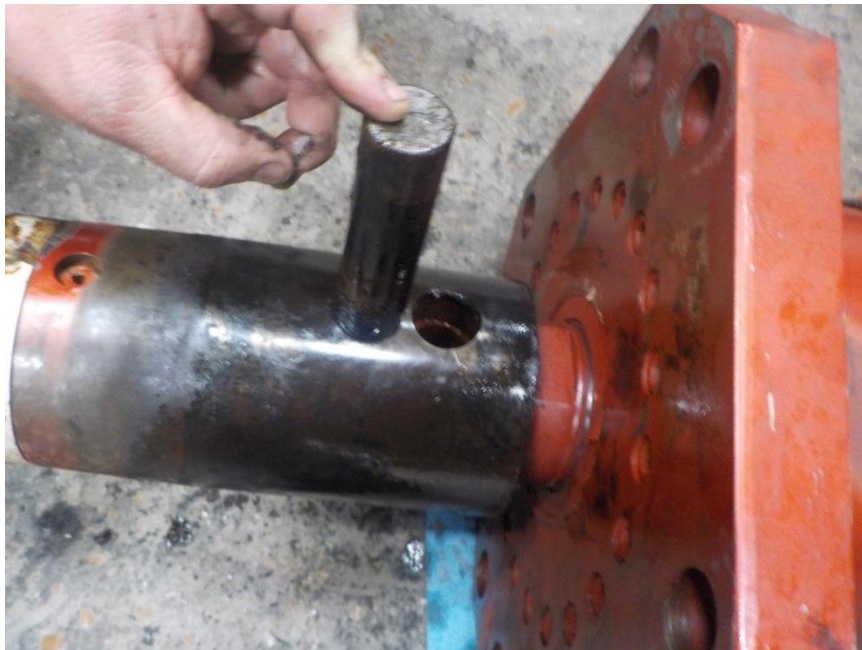




# BOTTOM CLAMP CONVERSION

Remove clamp slide pin. (4200138)

The pin will be marked with a T on one of the pin. This is the top of the pins taper. Strike or press the pin from the opposite end of the T to remove.



Now you can remove the clamp slide (4950063)

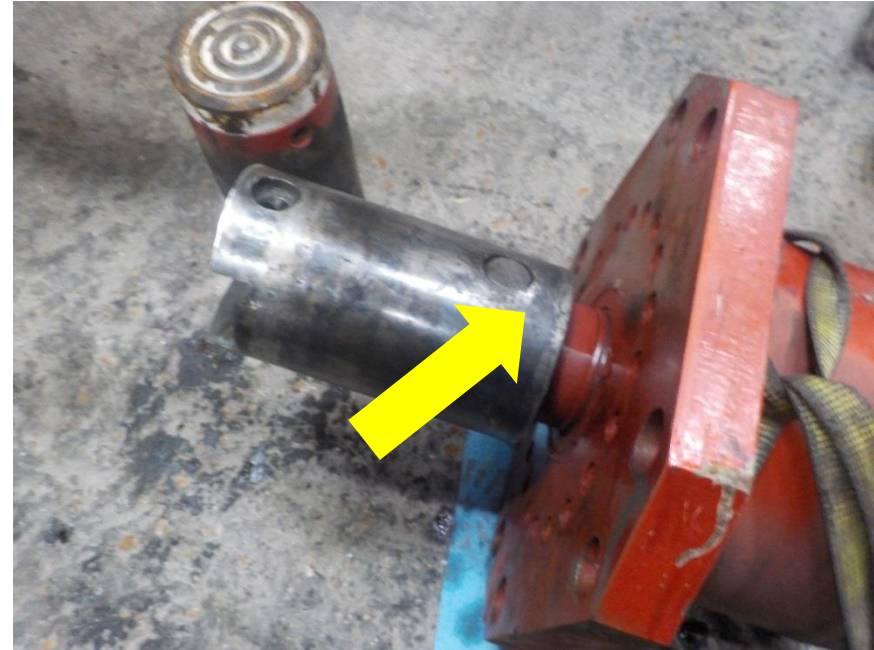


# BOTTOM CLAMP CONVERSION

Install standard clamp slide (4050311) over the cylinder rod and line up the holes



Install clamp slide pin (4200138) The pin will be marked with a T on one of the pin. This is the top of the pins taper. Strike or press the pin from the T end to install. Continue until flush





# BOTTOM CLAMP CONVERSION

Remove  $\frac{3}{4}$ "-10 x 2" bolts (9015917)-4 places to remove moveable side jaw guide (4050134)



Remove  $\frac{3}{4}$ "-10 x 2" bolts (9015917)-4 places to remove fixed side jaw guide (4051254)

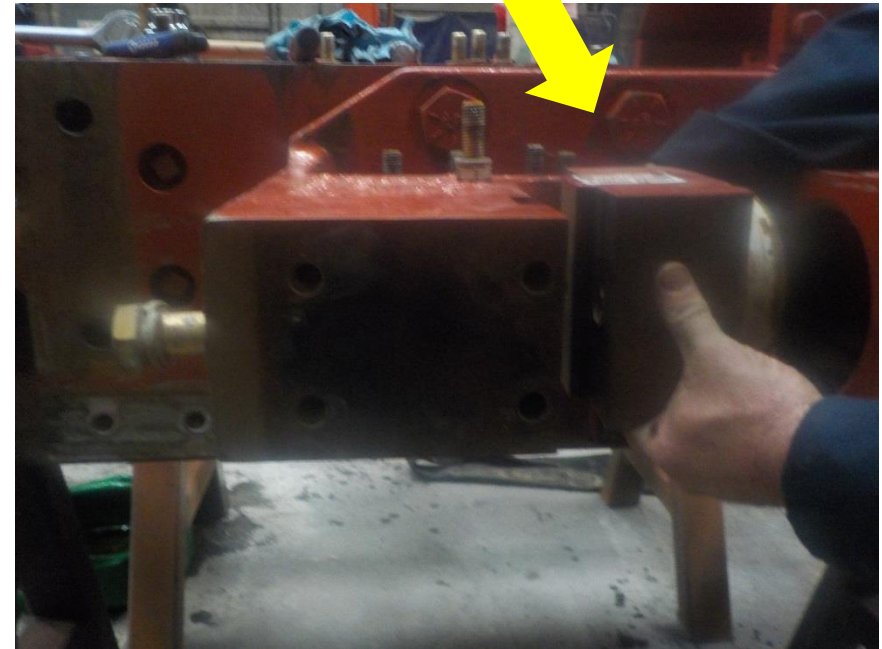


# BOTTOM CLAMP CONVERSION

Remove Fixed jaw bolts 1"-8  
x7" (9016137)-2 places



Remove Fixed jaw adapter  
(4950649)



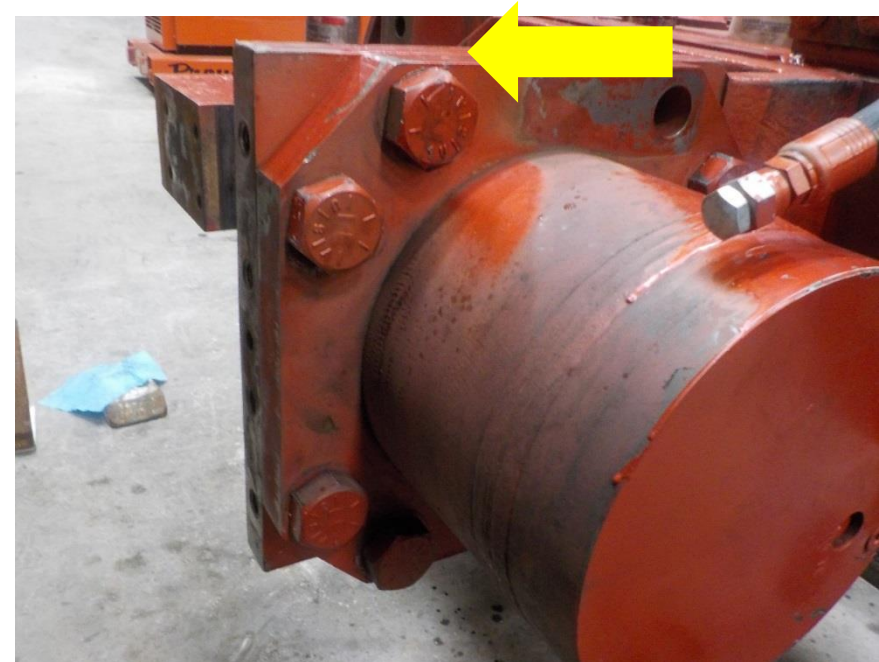


# BOTTOM CLAMP CONVERSION

Install clamp cylinder with standard clamp slide

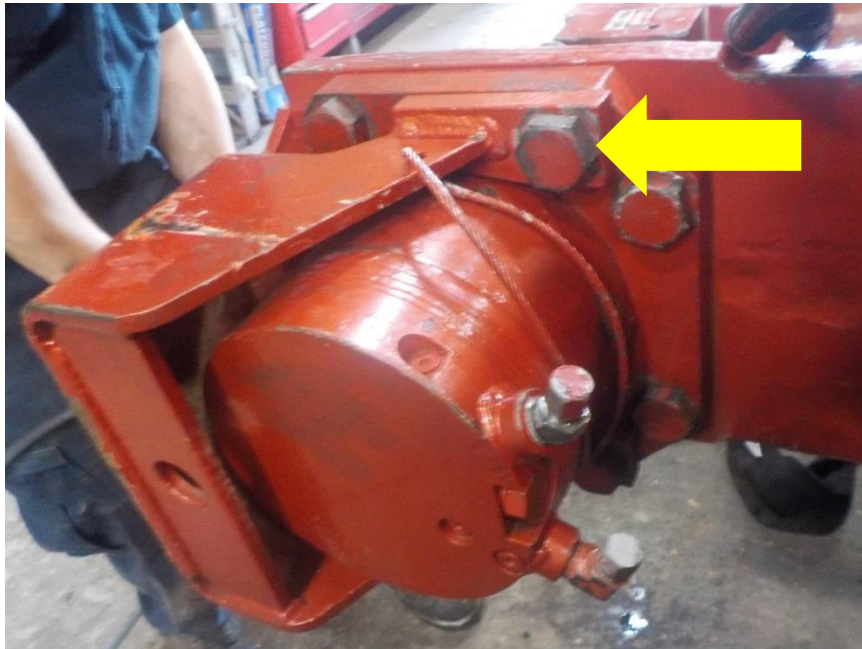


Replace 1 1/4"-12 x 3" bolt (9016218)-  
6 places on clamp cylinder flange.  
Apply a liberal amount of copper  
based anti-seize to the treads of  
each bolt. Torque to 1500 ft. lbs.

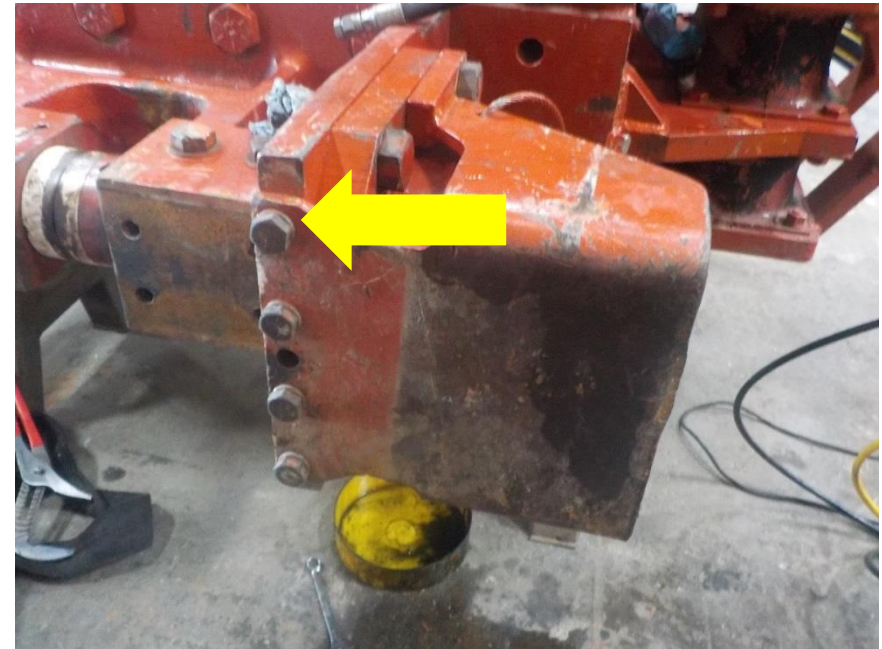


# BOTTOM CLAMP CONVERSION

Install clamp cylinder guard using (9016224) long bolts apply anti-seize and torque to 1,500 ft. lbs.



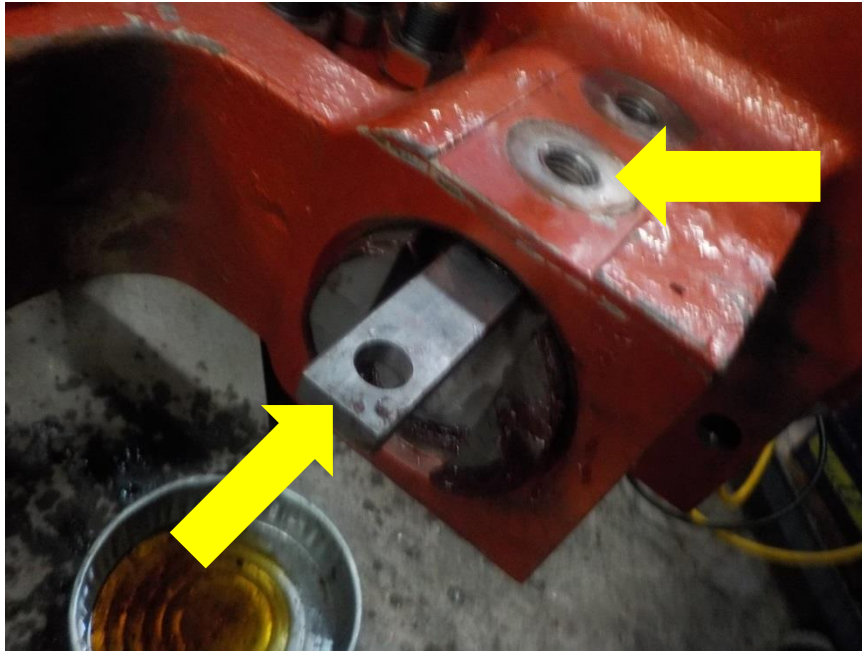
Install the bottom bolts (9015917) apply Loctite and torque to 250 ft. lbs.





# BOTTOM CLAMP CONVERSION

Install slide key (4050089) into appropriate slot on jaw guide making sure to line hole up for slide key bolts

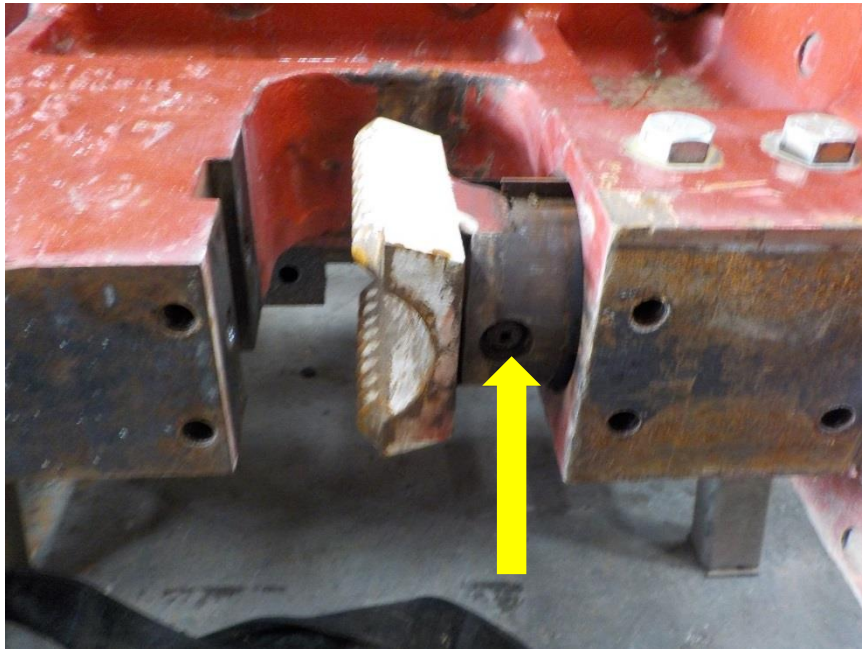


Once you have the slide key installed correctly you can install the slide key bolts (4050091)-2 places without flat washers

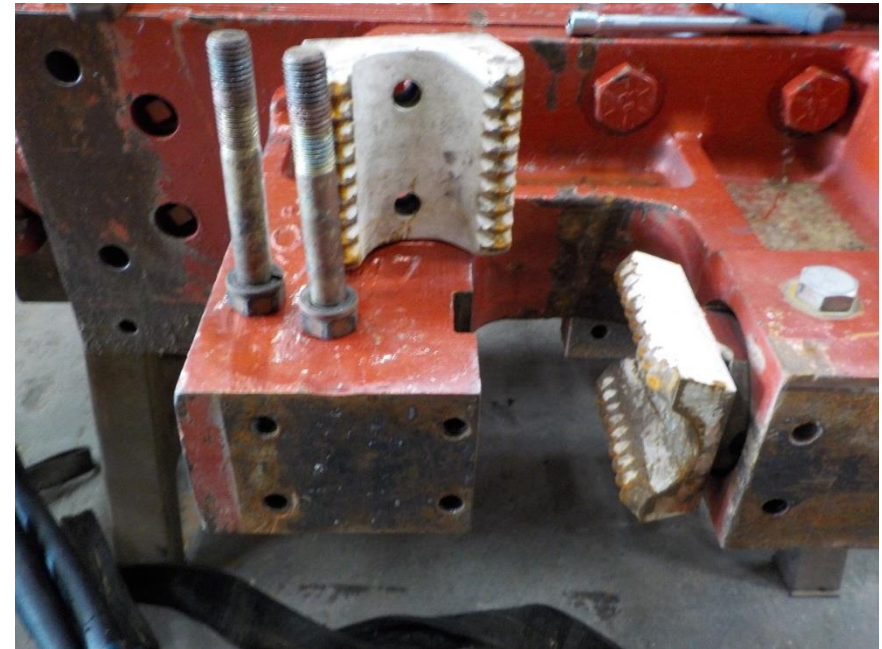


# BOTTOM CLAMP CONVERSION

Close the clamp and Install Standard V-5Esc moveable jaw (4050076) using the roll pin (9240055)



Open the clamp and install the fixed jaw (4050284) using the proper hardware (9016137) bolt and (9030612) lock washer. Apply Anti-seize to the jaw bolts and torque to 600 ft.lbs



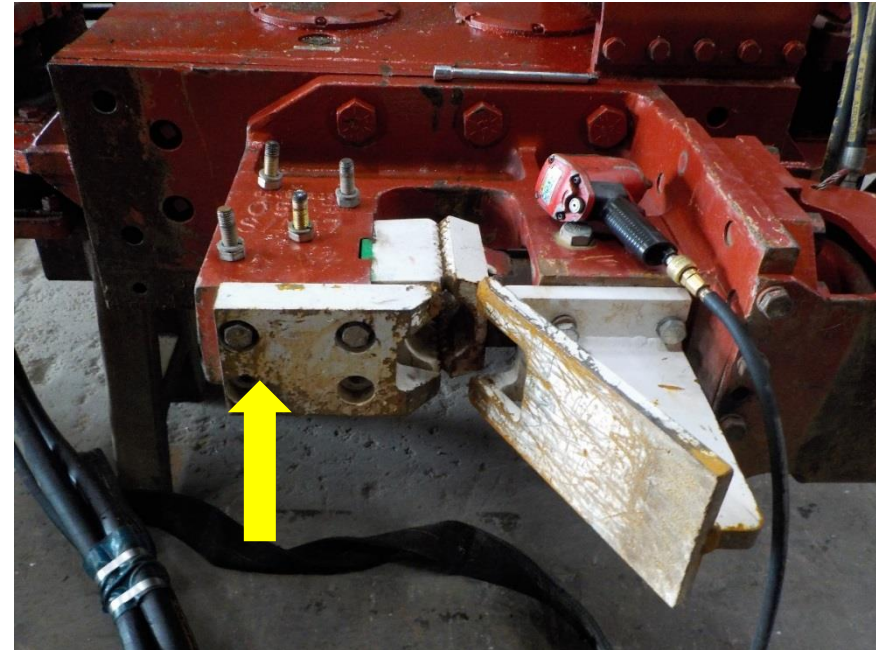


# BOTTOM CLAMP CONVERSION

Install tall jaw guide (4050134) using the same bolts (9015917) and lock washer (9030610) from the other jaw guide. Torque to 250 ft. lbs.



Install short jaw guide (4050359) using the same bolts (9015917) and lock washer (9030610) from the other jaw guide. Torque to 250 ft. lbs.



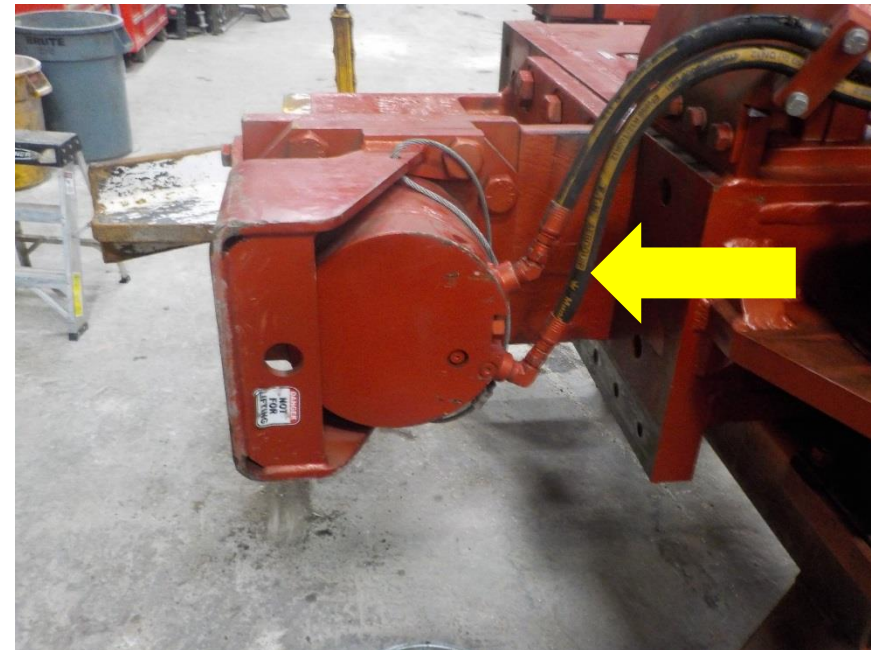
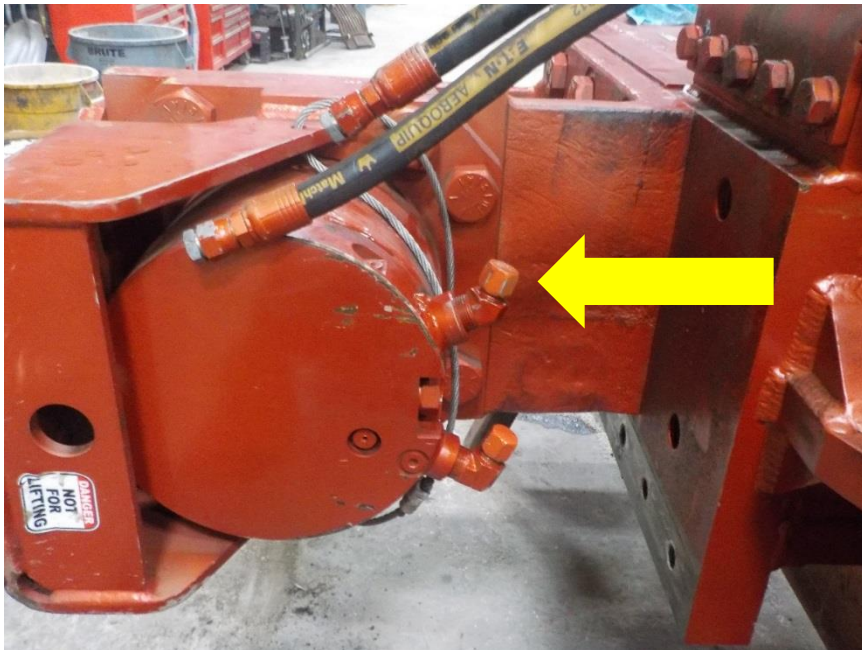
# BOTTOM CLAMP CONVERSION

Locate the clamp lines



Contents of hydraulic components may be under pressure extreme care should be taken when opening the components.

Remove the caps and plugs and reconnect the lines accordingly







**WARNING**

THE BOTTOM CLAMP  
CONVERSION IS NOT  
COMPLETE UNTIL YOU HAVE  
BLEAD THE CLAMP

Please Refer to the procedures in the MKT V-5Esc  
Service, Operating, and Maintenance Manual for  
clamp bleeding instructions.



## **WARNING**

THE FOLLOW RESOURCES HAVE DETAILED  
INSTRUCTIONS ON PROPERLY BLEEDING THE  
CLAMP(S)

- Please Refer to the procedures in the MKT V-5Esc Service. Operating, and Maintenance Manual for clamp bleeding instructions.
- Please refer to the MKT V-5Esc installation guide with or with out power unit, depending on your requirements
- All of these resources can be located on our [website](http://www.mktpileman.net/installation---set-up-documents.html)<http://www.mktpileman.net/installation---set-up-documents.html>



# BOTTOM CLAMP CONVERSION COMPLETE

You are now ready to put the MKT V-5Esc vibratory hammer to work. Please click the link to view an animation of the MKT V-8Esc in action <https://www.youtube.com/watch?v=nt2KZI4YErk>

If you have any questions please click on [www.mktpileman.com](http://www.mktpileman.com) for your nearest MKT representative